

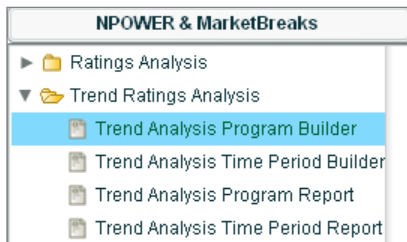
Reprocess a Trend Builder

How to Reprocess a MarketBreaks Program Trend Builder

You can learn what data has been reprocessed by using the **National Respondent Program & Commercial Reprocessing** tool which is available by visiting Nielsen Answers > Media Products > National Products section.

Note Reprocessing is not applicable for Time Period data since it is not reprocessed.

For Program Trend Builders based on Commercial data availability, it would be best to reprocess on the Friday prior to the latest release of the commercial data over the weekend.



From the National TV Toolbox home page, select the **Trend Ratings Analysis** folder, then click the **Trend Analysis Program Builder** report to display all appropriate Trend Program Builders.

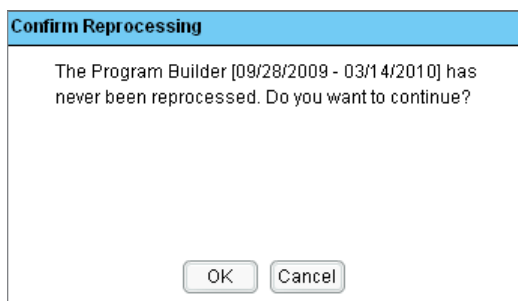
Click the Jobs tab and you'll see the Status column and dates in brackets [Month/Day/Year – Month/Day/Year].

Select the Completed or Pending Program Builder you'd like to reprocess by left-clicking it, so it highlights in yellow and then right-click to select **Reprocess Selection**.

Report Name	Status	Submitted	Completed	Report Output
Program Builder [09/28/2009 - 03/14/2010]	Complete		17:03	

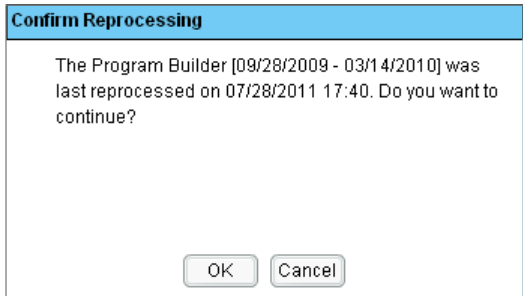
- Delete Selection
- Reprocess Selection
- New Spec
- Refresh Page
- Save Execution(s) to disk

The system will display one of two prompts before continuing. The first will state the builder job has never been reprocessed, do you want to continue?

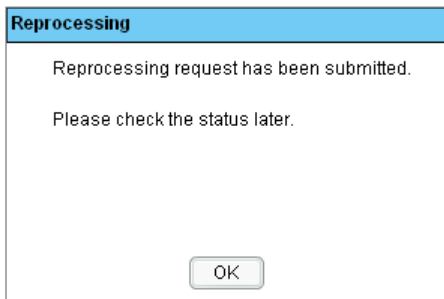


Reprocess a Trend Builder

The second prompt will state the the builder job was last reprocessed on Month/Day/Year at hh:mm, do you want to continue?



After either message, you will get a confirmation message.



These messages are to inform you potentially how much reprocessing could be available for your Builder Job.

Once you click **OK**, the system will identify the days that have been reprocessed since either

A- the builder was created

or

B- the builder was last reprocessed and rebuild only those days with reprocessing changes.

If any reprocessing was done to the builder, your builder will show a status of **Reprocessing Complete**, assuming additional data was not loaded to the builder based on data availability.